



H&H Home Inspection Inc.

1234 Anywhere Road
Royersford, PA 19468

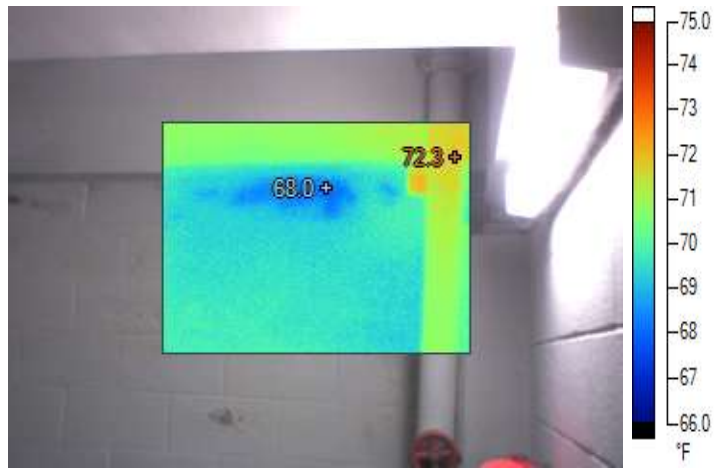
Royersford Apartment

Foundation walls

Prepared for:

Mike Dirks

5647 Buggy Lane
Collegeville, PA 19426



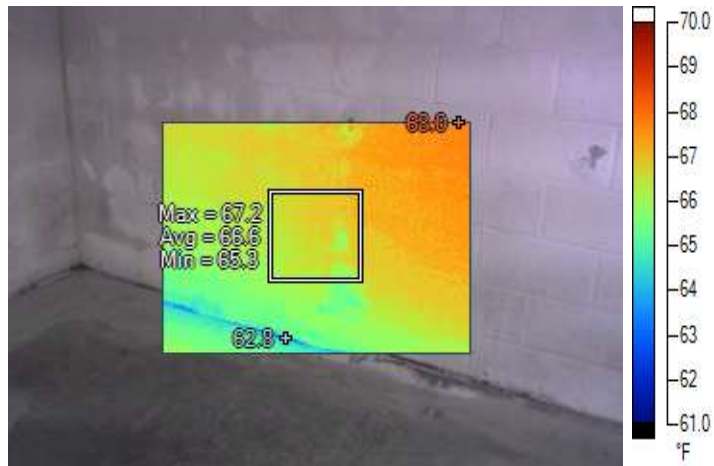
IR20061005_0141.is2

10/5/2006 9:15:43 AM

Wall area after using water hose. Emissive set at 1.0

Markers

Label	Temperature	Emissivity	Background
Hot	72.3 °F	1.00	68.0 °F
Cold	68.0 °F	1.00	68.0 °F



IR20061005_0147.is2

10/5/2006 9:23:04 AM

Garage wall where slab and wall meet.

Markers

Label	Average	Minimum	Maximum	Emissivity	Background	Std. Dev.
CenterBox	66.6 °F	65.3 °F	67.2 °F	0.95	68.0 °F	0.185

Label	Temperature	Emissivity	Background
Hot	68.0 °F	0.95	68.0 °F
Cold	62.8 °F	0.95	68.0 °F



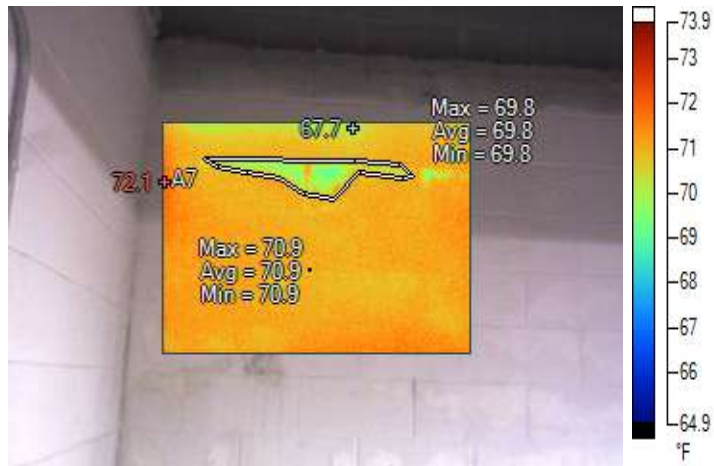
IR20061005_0148.is2

10/5/2006 9:24:00 AM

Same garage wall after using hose.

Markers

Label	Temperature	Emissivity	Background
Hot	68.5 °F	0.95	68.0 °F
Cold	66.7 °F	0.95	68.0 °F
P0	67.2 °F	0.95	68.0 °F
P1	67.4 °F	0.95	68.0 °F
P2	67.4 °F	0.95	68.0 °F
P3	67.2 °F	0.95	68.0 °F
P4	67.7 °F	0.95	68.0 °F



IR20061005_0149.is2

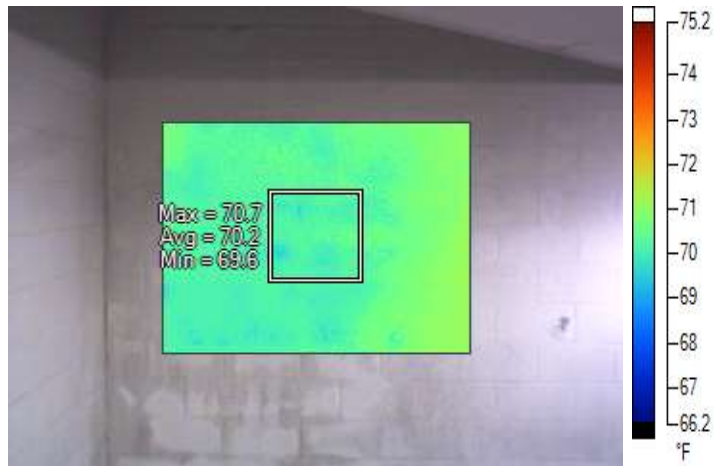
10/5/2006 9:37:40 AM

Change emissivity

Markers

Label	Average	Minimum	Maximum	Emissivity	Background	Std. Dev.
L0	69.8 °F	69.8 °F	69.8 °F	0.62	68.0 °F	0.000
A0	70.9 °F	70.9 °F	70.9 °F	0.62	68.0 °F	0.000
A1				0.62	68.0 °F	0.000
A2				0.62	68.0 °F	0.000
A3				0.62	68.0 °F	0.000
A4				0.62	68.0 °F	0.000
A5				0.62	68.0 °F	0.000
A6				0.62	68.0 °F	0.000
A7				0.62	68.0 °F	0.000

Label	Temperature	Emissivity	Background
Hot	72.1 °F	0.62	68.0 °F
Cold	67.7 °F	0.62	68.0 °F



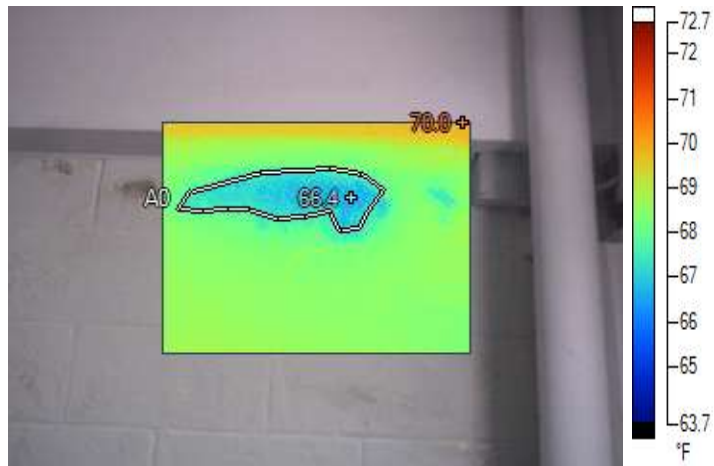
IR20061005_0150.is2

10/5/2006 9:38:22 AM

Garage wall at same corner where suspected leak.
these marks are not as active as other side of wall.

Markers

Label	Average	Minimum	Maximum	Emissivity	Background	Std. Dev.
CenterBox	70.2 °F	69.6 °F	70.7 °F	0.95	68.0 °F	0.094



IR20061005_0152.is2

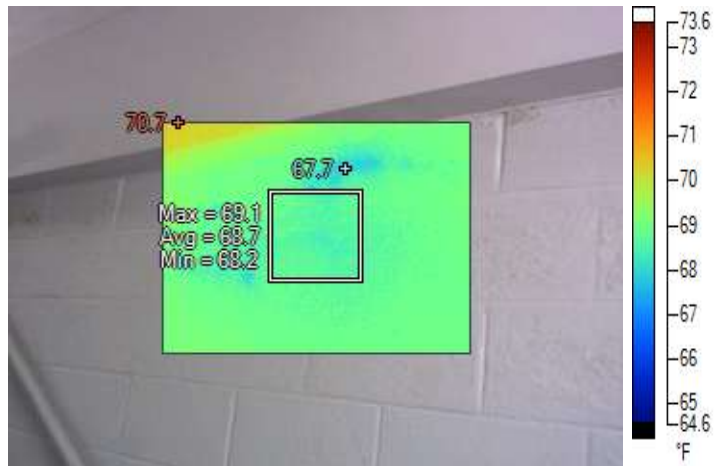
10/5/2006 9:44:58 AM

Staircase wall at exterior ground level at corner.

Markers

Label	Average	Minimum	Maximum	Emissivity	Background	Std. Dev.
A0				0.95	68.0 °F	0.000

Label	Temperature	Emissivity	Background
Hot	70.0 °F	0.95	68.0 °F
Cold	66.4 °F	0.95	68.0 °F



IR20061005_0153.is2

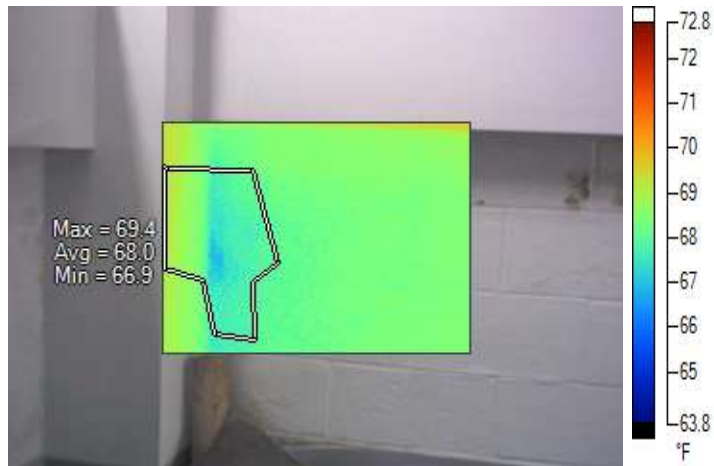
10/5/2006 9:45:31 AM

This area is at exterior ground level.

Markers

Label	Average	Minimum	Maximum	Emissivity	Background	Std. Dev.
CenterBox	68.7 °F	68.2 °F	69.1 °F	0.95	68.0 °F	0.077

Label	Temperature	Emissivity	Background
Hot	70.7 °F	0.95	68.0 °F
Cold	67.7 °F	0.95	68.0 °F



IR20061005_0154.is2

10/5/2006 9:47:03 AM

The problem seems to be from the exterior waterproofing.

Markers

Label	Average	Minimum	Maximum	Emissivity	Background	Std. Dev.
A0	68.0 °F	66.9 °F	69.4 °F	0.95	68.0 °F	0.308



IR20061005_0155.is2

10/5/2006 9:47:33 AM

Slight moisture after using water on wall. This was done for a short period only. Emissivity was 1.0

Markers

Label	Temperature	Emissivity	Background
Hot	69.8 °F	1.00	68.0 °F
Cold	67.7 °F	1.00	68.0 °F